

SUB-COMMITTEE ON SAFETY OF  
NAVIGATION  
57th session  
Agenda item 14

NAV 57/INF.11  
9 May 2011  
ENGLISH ONLY

## ANY OTHER BUSINESS

### Development of a Mandatory Polar Code – Voyage Management and Cetaceans (Addendum)

Submitted by the Friends of the Earth International (FOEI), the International Fund  
for Animal Welfare (IFAW), the World Wide Fund For Nature (WWF) and the  
Pacific Environment

#### SUMMARY

*Executive summary:* This document from FOEI, IFAW, WWF and the Pacific Environment serves as an addendum to document NAV 57/INF.10 and provides additional detailed information on vessel activity in western Arctic areas notable for the presence of cetaceans

*Strategic direction:* 5.2

*High-level action:* 5.2.1

*Planned output:* 5.2.1.19

*Action to be taken:* Paragraph 3

*Related documents:* DE 53/18/3, DE 54/13/3, DE 54/INF.5, DE 55/12, DE 55/12/1, DE 55/12/3, DE 55/12/5, DE 55/12/21, DE 55/WP.1, MEPC.1/Circ.674 and NAV 57/INF.10

#### Introduction

1 The document should be considered as an addendum to document NAV 57/INF.10 and provides supplemental information, specifically AIS vessel track maps<sup>1</sup> and histograms, which was only recently obtained by co-sponsors and could not have been submitted at an earlier date.

2 This addendum also makes certain corrections to documents DE 55/12/21 and NAV 57/INF.10<sup>2</sup>.

<sup>1</sup> For figures 1 and 2, the vessel tracks have been derived from a limited number of shore-based AIS receiving stations. They are intended to show the tracks of a majority of vessels, but the number of tracks does not necessarily indicate shipping density, particularly for offshore areas outside the reliable reception range of the receiving stations.

<sup>2</sup> In document DE 55/12/21, Gulland *et al.* 2005 should replace Moore *et al.* 2001 at the end of the second sentence in section 8. In document NAV 57/INF.10, an "(Id.)" should be included at the end of the Figure 6 caption.

## Bering Strait Region Vessel Tracks, Q3 2009

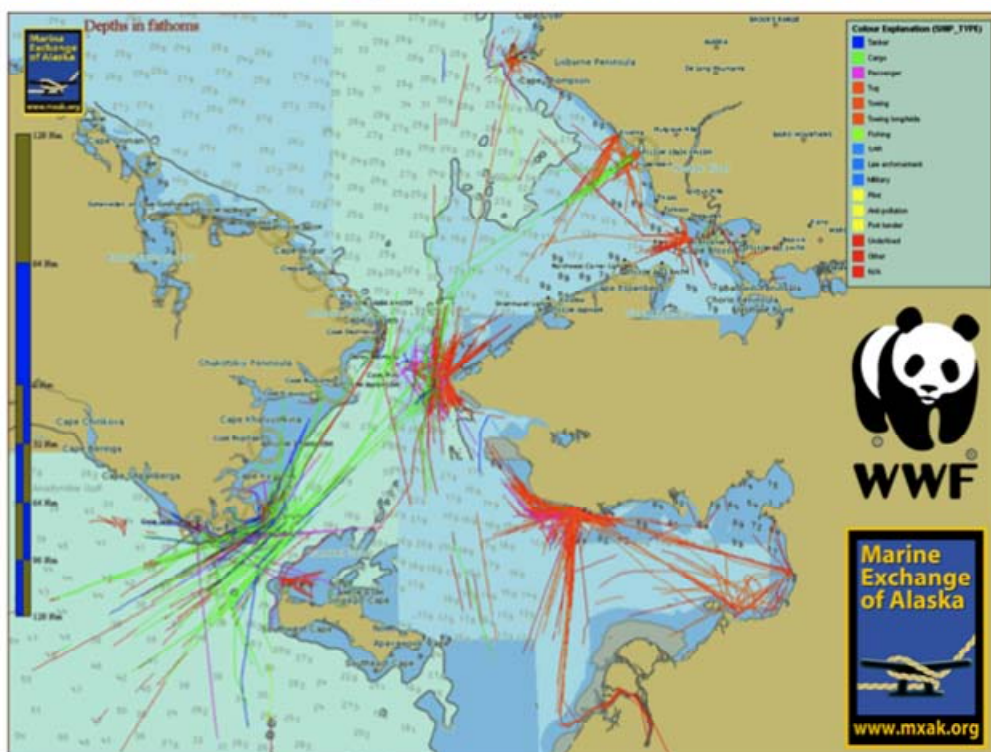


Figure 1 – AIS vessel tracks for the greater Bering Strait area, 3<sup>rd</sup> quarter 2009 (WWF, 2011)

## Bering Strait Region Vessel Tracks, Q3 2010

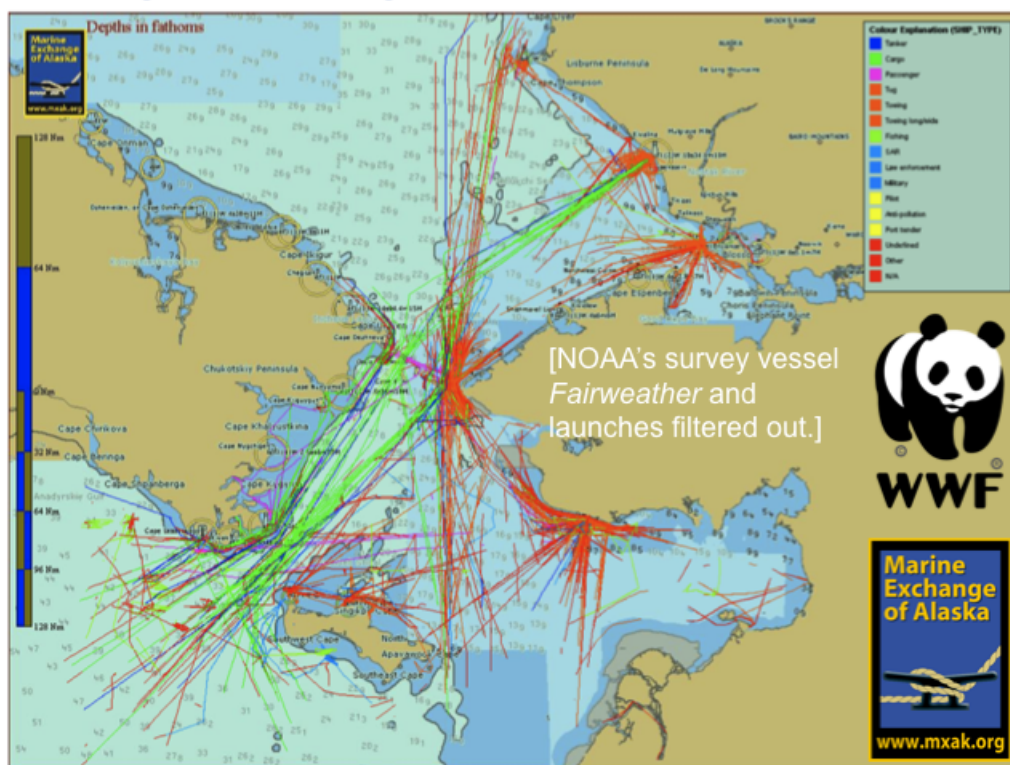


Figure 2 – AIS vessel tracks for the greater Bering Strait area, 3<sup>rd</sup> quarter 2010 (WWF, 2011)

## Bering Strait Transits by Section – 2009

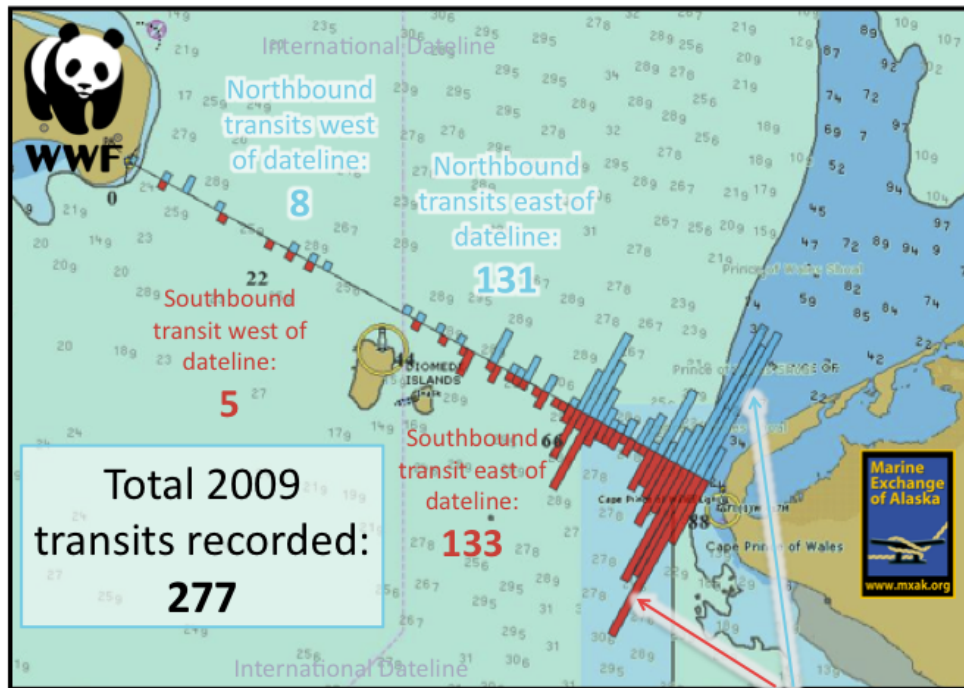
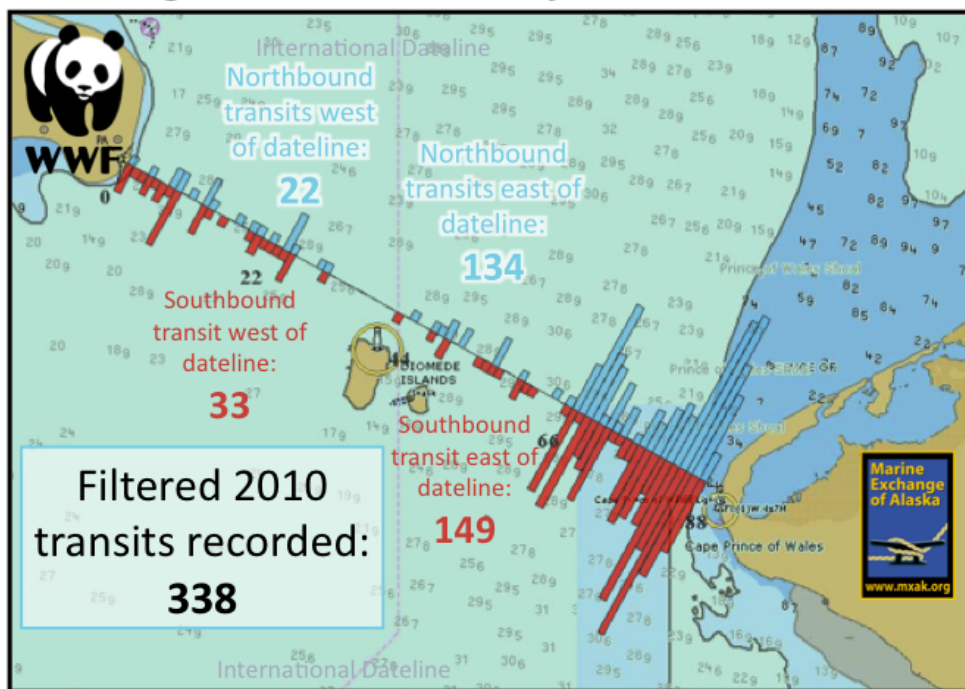


Figure 3 – Bering Strait transit histogram, 2009 (WWF, 2011)

## Bering Strait Transits by Section – 2010\*



\* Excluding NOAA Survey Ship *Fairweather* and her launches.

Figure 4 – Bering Strait transit histogram, 2010 (WWF, 2011)



### Arctic Shipping Routes: AIS vessel traffic near Barrow, 2009

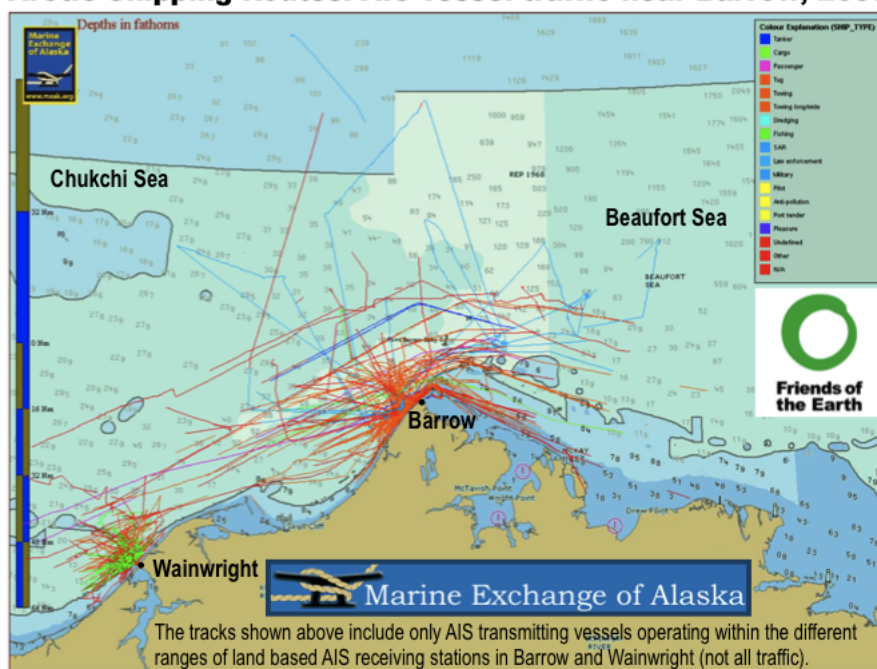


Figure 5 – AIS vessel tracks for greater Barrow, AK area, 2009 (FOE, 2011)

### Arctic Shipping Routes: AIS vessel traffic near Barrow, 2010

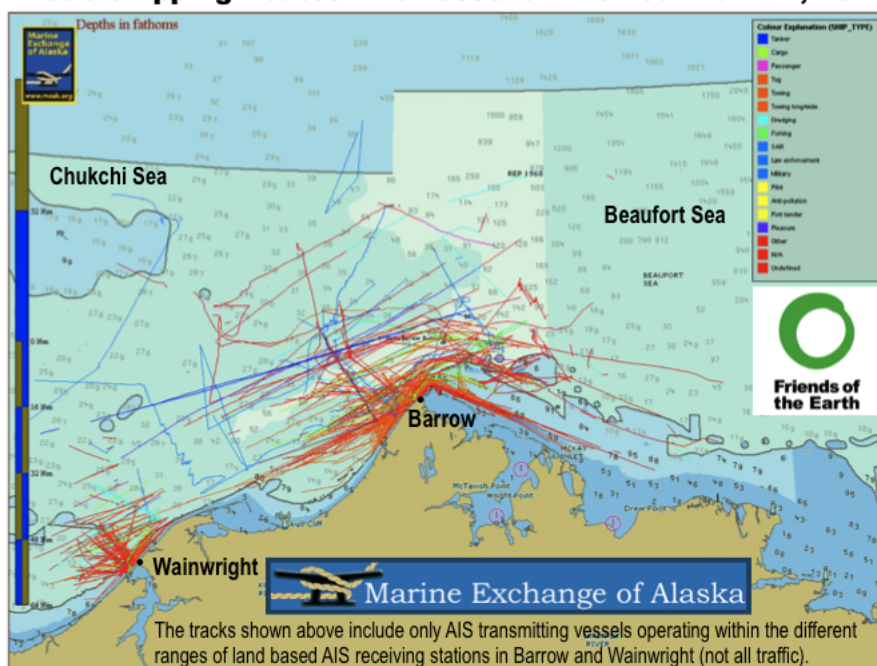


Figure 6 – AIS vessel tracks for greater Barrow, AK area, 2010 (FOE, 2011)

### Action requested of the Sub-Committee

3 The Sub-Committee is invited to note the information provided in this document as an addendum to document NAV 57/INF.10.