

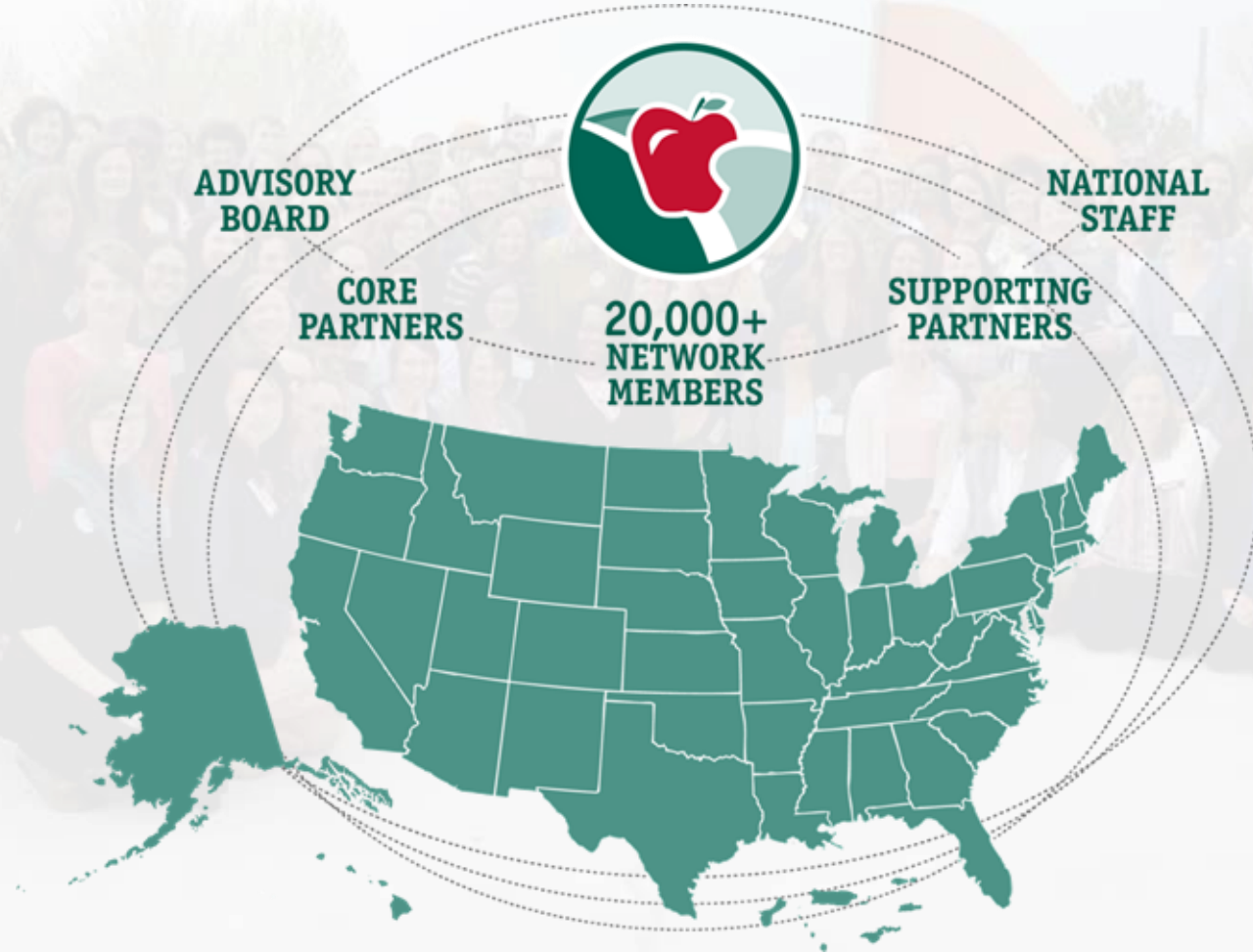


NATIONAL
FARM to SCHOOL
NETWORK

How NFSN Can Help You In Your Role

Farm to School Resources

OUR NETWORK



NATIONAL
FARM to SCHOOL
NETWORK

NATIONAL
FARM to SCHOOL
NETWORK

OUR CORE FUNCTIONS

A hub for:

Information

Networking

Advocacy

Connecting people to:

Resources

People

Policy



**NATIONAL
FARM to SCHOOL
NETWORK**

**NATIONAL
FARM to SCHOOL
NETWORK**

WHAT IS FARM TO SCHOOL?

CORE ELEMENTS OF **FARM** *to* **SCHOOL**



NATIONAL
FARM *to* SCHOOL
NETWORK

NATIONAL
FARM *to* SCHOOL
NETWORK

WHY FARM TO SCHOOL?



NATIONAL
FARM to SCHOOL
NETWORK

NATIONAL
FARM to SCHOOL
NETWORK

FARM TO EARLY CARE AND EDUCATION

Same core elements of farm to school applied in settings for children 0-5

- Child care centers, family child care homes, preschools, nursery schools, Head Starts, Early Head Starts, programs in K-12 districts, etc.

Why farm to ECE?

- Health and Wellness
- Experiential Learning
- Family and Community Engagement



NATIONAL
FARM to SCHOOL
NETWORK

NATIONAL
FARM to SCHOOL
NETWORK

POLICY 101 – A Brief Primer

- **Elections:** Putting people in power who have values that align with yours (NFSN does not work on electoral campaigns)
- **Authorization:**
 - Opportunity to support or oppose bills
 - Bills can serve a variety of functions
 - CNR is a reauthorization of a package of bills
- **Appropriations:** Make sure money goes where it's supposed to
- **Implementation:** Making sure the program/policy works!

HISTORY OF CNR

- 1946: School lunch program for national security
- 1966: Expands school lunch, adds breakfast
- 1972: WIC pilot established
- 1992: WIC Farmers Market Nutrition Program
- 2010: Nutrition standards and Farm to School Grant Program



KIDS EAT LOCAL ACT OF 2019

- 2008 Farm Bill established a geographic preference option to improve opportunities for local procurement in school meal programs
- Schools currently not allowed to make a specific geographic preference in bids
- “Workarounds” have been put into practice

FARM TO SCHOOL ACT OF 2019

- Farm to School Act “marker bill” (ideas bill) proposed in 2015 and 2017 to expand the USDA Farm to School Grant Program
- Proposed changes to 2017 bill:
 - Increases annual mandatory funding from \$5 million to \$15 million
 - Increases participation from beginning, veteran, and socially disadvantaged farmers
 - Expands program scope to early care and education, summer, and afterschool programs
 - Increases access among tribal schools to traditional foods from tribal producers
 - Increase grant cap from \$100K to \$250K

NFSN Resources

- Getting started with Farm to School
- Benefits of Farm to School: sets the stage for justifying local foods and local food purchasing
- Farm to School Training Templates:
[The how and why of local procurement](#)
[Culinary skills for local food](#)
[Farm to School Readiness for Child Nutrition Professionals](#)

Partner Resources

- [USDA Procuring Local Foods for Child Nutrition Programs](#)
- [Purchasing Michigan Products: A Step by Step Guide](#)
- [Sourcing Local Foods: Understanding Procurement Rules and Regulations Webinar](#)

Why does my advocacy matter?

- If you aren't speaking up, someone else is speaking for you.
- Policy sets the rules of the road. Want to see a more just, sustainable food & farm system – including strong farm to school? Policy is one means to help us get there.

Upcoming Events



NATIONAL **FARM** *to* **CAFETERIA** CONFERENCE

NATIONAL FARM TO SCHOOL NETWORK

April 20-24, 2020 | Albuquerque, NM



NATIONAL
FARM *to* **SCHOOL**
NETWORK

Krystal Oriadha – Senior Director of Policy and Programs - NFSN
Krystal@farmtoschool.org

