
Astra Agro Lestari palm oil concession supply chains

Research conducted for

Friends of the Earth United States

November 2021

1	ToR	2
2	Locations of concessions and associated mills	2
3	Traders associated with the mills	5
4	Consumer goods companies associated with the mills	6
5	Conclusion	9

1 Terms of Reference

The research that follows is intended to answer the following questions:

- Identify customers linked to mills associated with three plantation subsidiaries of Astra Agro Lestari/Astra International in Central and West Sulawesi: PT Mamuang, PT Lestari Tani Teladan and PT Agro Nusa Abadi.
- Identify palm oil traders that currently source from PT Mamuang, PT Lestari Tani Teladan and PT Agro Nusa Abadi?
- Identify US and EU consumer brands with current supply chain links to AAL/AI, including both direct links (eg, AAL is a first-tier supplier) and indirect links (eg, AAL is second or third tier supplier).
- Identify US and EU consumer brands with current supply chain links to PT Mamuang, PT Lestari Tani Teladan and PT Agro Nusa Abadi.

Data provided is based on publicly available supply chain traceability data and has not been confirmed through queries with companies or through ground investigations. Therefore, any inferences or allegations based on this data should be independently verified.

2 Locations of concessions and associated mills

It is assumed in this research that the palm oil fruit grown in the named concessions are used solely or partially at the name-associated mills. The names of two of the concessions (PT Lestari Tani Teladan and PT Agro Nusa Abadi) appear on universal mill lists. The third concession (PT Mamuang) does not have an associated mill name. Below are the concessions and mills that are likely associated with them (via Global Forest Watch).

PT Lestari Tani Teladan

The concession map accessed does not list Tani Teladan but it shows the mill of the same name (right bottom) and the satellite photo clearly shows a concession to the West of it even though it has not been mapped and is in close proximity to PT Mamuang (see below).



PT Agro Nusa Abadi

The concession map accessed does not list Nusa Abadi but it shows the mill of the same name. The satellite photo clearly shows a concession to the North of it even though it has not been mapped.



PT Mamuang

According to the concessions map there are four plantations in close vicinity. PT Mamuang is shown in this screenshot. The concession to the North is PT Pasangkayu Blok 1 and to the Northeast is PT Pasangkayu Blok 1. Too the Southwest is PT Letawak Blok 1.

There are also two mills located in the vicinity. One in the PT Pasangkayu Blok goes by the name of **Pasangkayu** (often spelled Pasang Kayu) and is owned by AAL. The other that is located at the edge of PT Letawak Blok 1 is also owned by AAL and named **Letawa**. It is presumed that the fruit from PT Mamuang is transported to either of these mills with Pasangkayu being the closer one.

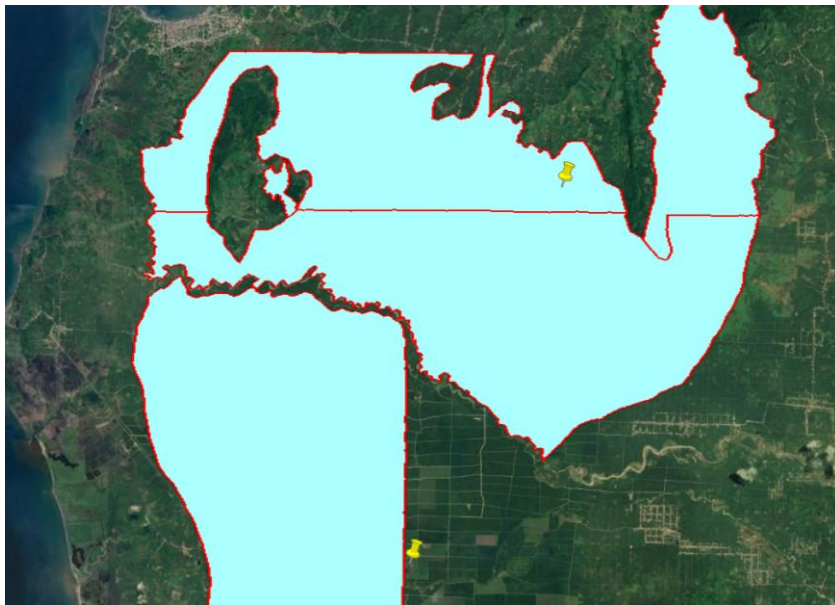
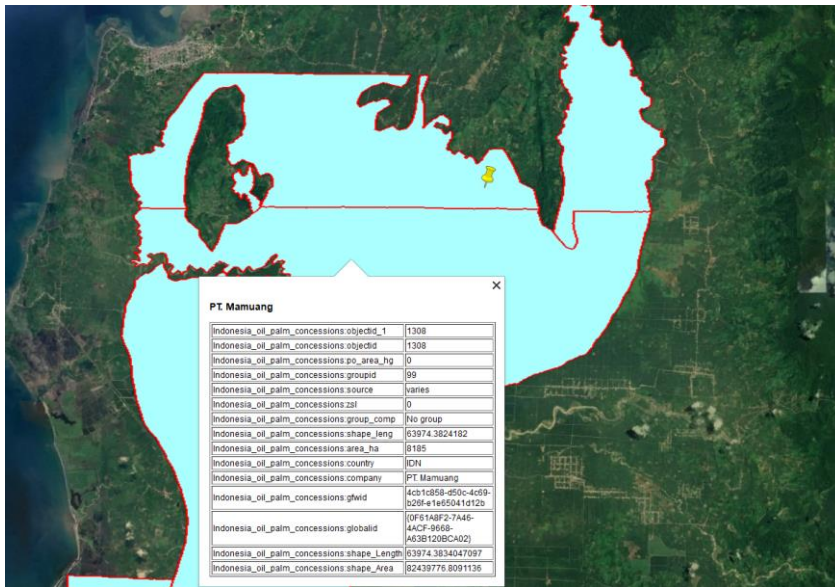
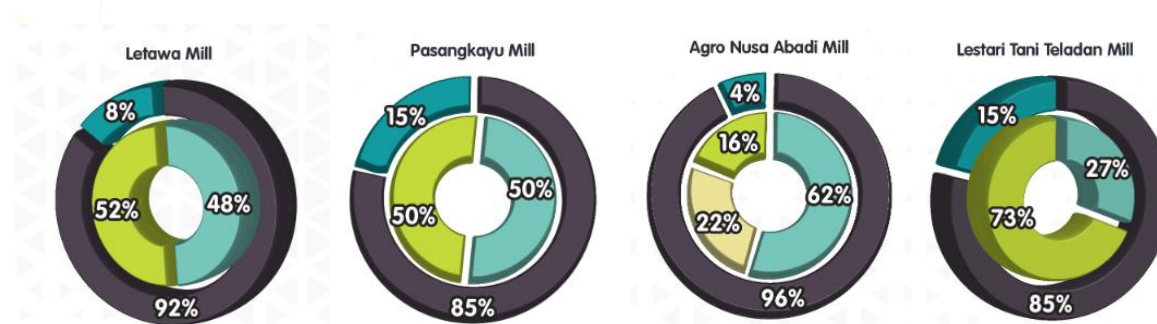


Table 1: Summary Universal mill list and target concessions:¹

X	Y	UML_ID	Group_Name	Mill_Name	RSPO_Status	Province	Confidence
121.485	-2.12989	PO1000004093	ASTRA AGRO LESTARI	AGRO NUSA ABADI	Not RSPO Certified	Sulawesi Tengah	1-Fully Verified
119.4866	-1.37047	PO1000008218	ASTRA AGRO LESTARI	LESTARI TANI TELADAN	Not RSPO Certified	Sulawesi Tengah	2-High Confidence
119.4725	-1.22236	PO1000004113	ASTRA AGRO LESTARI	PASANGKAYU	PASANGKAYU	Sulawesi Barat	1-Fully Verified
119.4282	-1.33213	PO1000004109	ASTRA AGRO LESTARI	LETAWA	LETAWA	Sulawesi Barat	1-Fully Verified

AAL provides broad figures on the traceability and supply to these mills:²

■ Traceable ■ Associated (Full Operator) ■ Independent (Non Operator)
■ Under Verification ■ Owned Estate



3 Traders associated with the mills

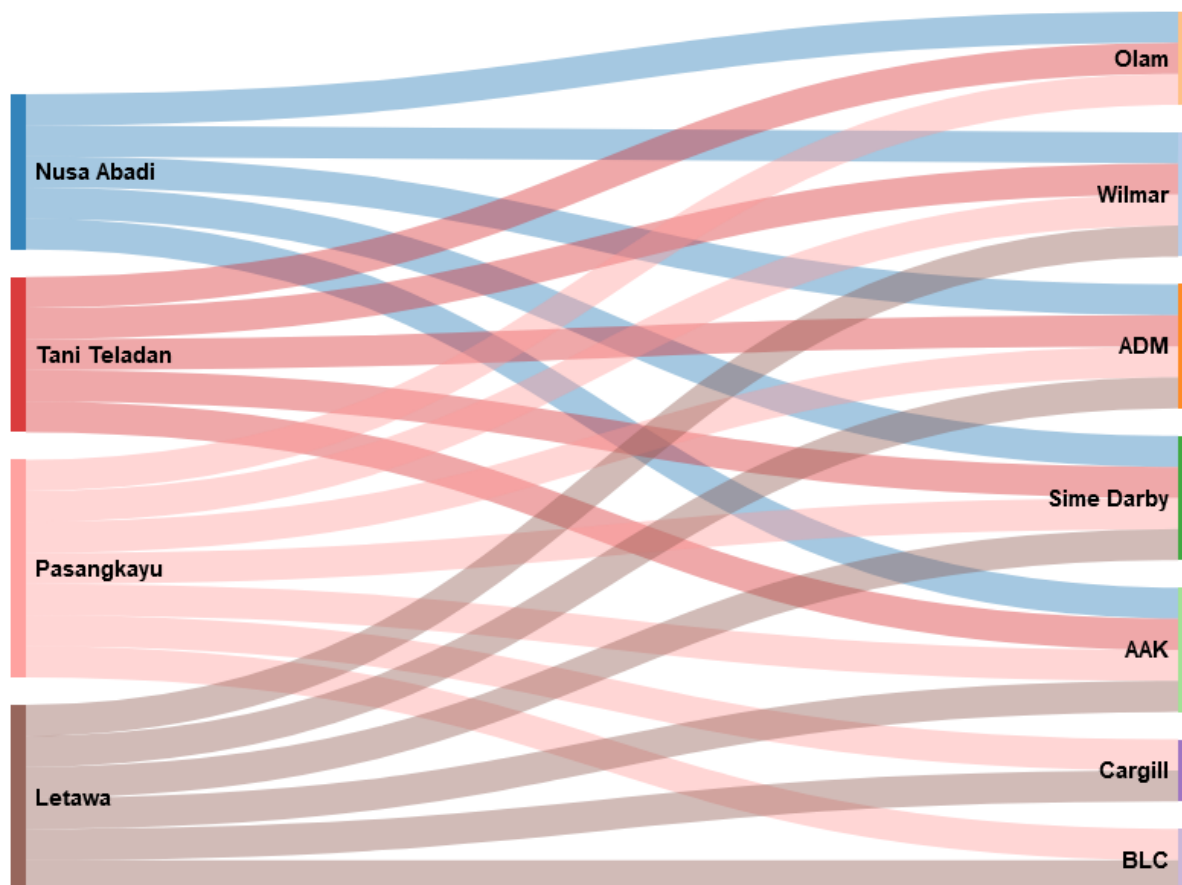
This research is limited to the mill lists made publicly available by consumer goods companies. The latest mill lists were downloaded and then searched. The list below contains both primary and secondary traders. It is important to note that there is a delay in the publication of mills lists. Even if a link has been established between these mills and the latest lists by traders or consumer companies, this is not a guarantee that these links still exist today.

Where suppliers are listed, these have been included in brackets.

Table 2: Traders linked to AAL and selected mill

	AAL/Astra international	Nusa Abadi (PO1000004093)	Tani Teladan (PO1000008218)	Pasangkayu (PO1000004113)	Letawa (PO1000004109)
Musim Mas ³	YES	NO	NO	NO	NO
Wilmar ⁴	YES ⁵	YES ⁶	YES ⁷	YES ^{8 9}	YES ¹⁰
Cargill ¹¹	YES ¹²	NO	NO	YES ¹³	YES ¹⁴
ADM ¹⁵	YES ¹⁶	YES ¹⁷	YES ¹⁸	YES ¹⁹	YES ²⁰
Bunge Loders Croklaan ²¹	YES ²²	NO	NO	YES ²³	YES ²⁴
Fuji Oils ²⁵	YES ²⁶	NO	NO	NO	NO
Olam ²⁷	YES ²⁸	YES ²⁹	YES ³⁰ (BLC)	YES ³¹ (BLC)	NO
Sime Darby	YES ^{32 33}	YES ³⁴	YES ³⁵	YES ³⁶	YES ³⁷³⁸
AAK	YES ³⁹	YES ⁴⁰	YES ⁴¹	YES ⁴²	YES ⁴³
Louis Dreyfus ⁴⁴	YES ⁴⁵	NO	NO	NO	NO
IFFCO	2018 only	2018 only	2018 only	2018 only	2018 only
KLK	YES ⁴⁶	YES ⁴⁷	YES ⁴⁸	YES ⁴⁹	YES ⁵⁰

Figure 1: Links between four Astra Astro Lestari mill and major palm oil traders



4 Consumer goods companies associated with the mills

This research is limited to the mill lists available by consumer goods companies. The latest mill lists were downloaded and then searched. It is important to note that there is a delay in the publication of mills lists. Even if a link has been established between these mills and the latest lists by traders or consumer companies, this is not a guarantee that these links still exist today.

Where suppliers are listed, these have been included in brackets. For lists that are considered old (released prior to 2020) the year or period covered by the mill list in brackets.

Table 3: Consumer Companies Linked to AAL and Select Mills

	AAL/Astra international	Nusa Abadi (PO1000004093)	Tani Teladan (PO1000008218)	Pasangkayu (PO1000004113)	Letawa (PO1000004109)
Barry Callebaut	No list found	No list found	No list found	No list found	No list found
BASF ⁵¹	YES ⁵²	NO	NO	YES ⁵³	YES ⁵⁴
Beiersdorfer ⁵⁵	YES ⁵⁶	NO	NO	NO	
Colgate	YES ⁵⁷	YES ⁵⁸ (Wilmar)	NO	YES ⁵⁹ (Wilmar)	YES ⁶⁰ (Wilmar)
Danone ⁶¹	YES ⁶²	YES ⁶³	NO	YES ⁶⁴	YES ⁶⁵
Ferrero ⁶⁶	NO	NO	NO	NO	NO
Friesland Campina ⁶⁷	YES ⁶⁸	NO	NO	YES ⁶⁹ (Cargill)	YES ⁷⁰ (Cargill)
General Mills ⁷¹	YES ⁷²	YES ⁷³	YES ⁷⁴	YES ⁷⁵	YES ⁷⁶

Grupo Bimbo⁷⁷	YES ⁷⁸	YES ⁷⁹ (BLC, Cargill, IFF, Wilmar)	YES ⁸⁰ (BLC, IFF)	YES ⁸¹ (Wilmar, BLC, IFF,	YES ⁸² (IFF, Wilmar, Barry Callebaut, BLC)
Hershey⁸³	YES ⁸⁴	YES ⁸⁵ (Cargill)	NO	NO	YES ⁸⁶ (AAK)
IKEA⁸⁷	No list found	No list found	No list found	No list found	No list found
Johnson & Johnson⁸⁸	YES ⁸⁹	YES ⁹⁰	YES ⁹¹	YES ⁹²	YES ⁹³
Kellogg⁹⁴	YES [2018] ⁹⁵	YES [2018] ⁹⁶	NO	YES [2018] ⁹⁷	YES [2018] ⁹⁸
L'Oreal⁹⁹	YES ¹⁰⁰	YES ¹⁰¹	NO	YES ¹⁰²	YES ¹⁰³
Mars¹⁰⁴	NO	NO	NO	NO	NO
Mondelez¹⁰⁵	YES ¹⁰⁶	YES ¹⁰⁷ (Cargill, BLC_Global, Wilmar, AAK, Apical)	YES ¹⁰⁸ (Olam, BLC_Global, AAK)	YES ¹⁰⁹ Olam, BLC_Global, Wilmar, AAK)	YES ¹¹⁰ (Olam, Wilmar, BLC_Global, AAK)
Neste¹¹¹	NO	NO	NO	NO	NO
Nestle¹¹²	YES ¹¹³	YES ¹¹⁴ (BLC, Sime Darby)	NO	YES ¹¹⁵ (Cargill, BLC)	YES ¹¹⁶ (Cargill, Sime Darby, BLC)
P&G¹¹⁷	YES ¹¹⁸	YES ¹¹⁹	NO	YES ¹²⁰	YES ¹²¹
PepsiCo¹²²	YES ¹²³	YES ¹²⁴	YES ¹²⁵	YES ¹²⁶	YES ¹²⁷
Reckitt	YES ¹²⁸	YES ¹²⁹ (Wilmar, KLK)	YES ¹³⁰ (KLK)	YES ¹³¹ (KLK)	YES ¹³² (KLK, BLC, Wilmar)
Unilever¹³³	YES ¹³⁴	YES ¹³⁵	YES ¹³⁶	YES ¹³⁷	YES ¹³⁸
YUM brands	NO	NO	NO	NO	NO

Figure 2: Links between four Astra Astro Lestari mills and major consumer goods companies – simplified

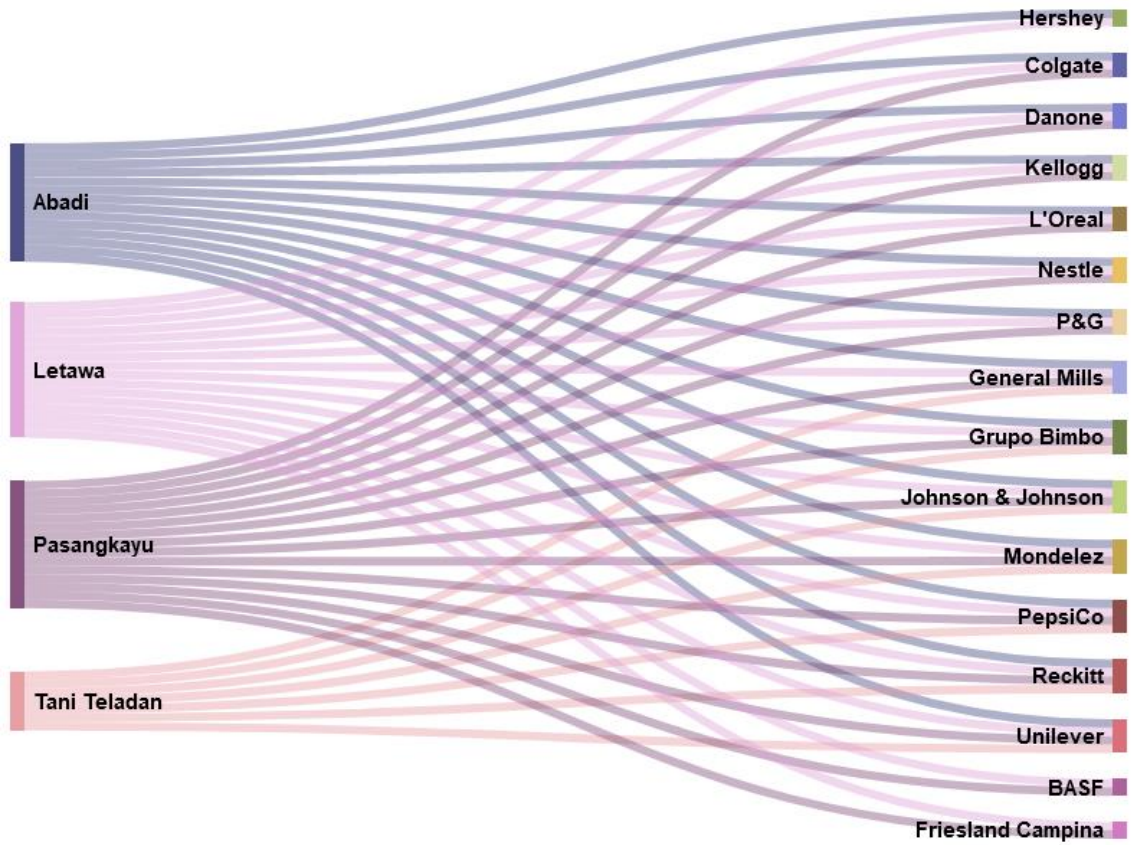
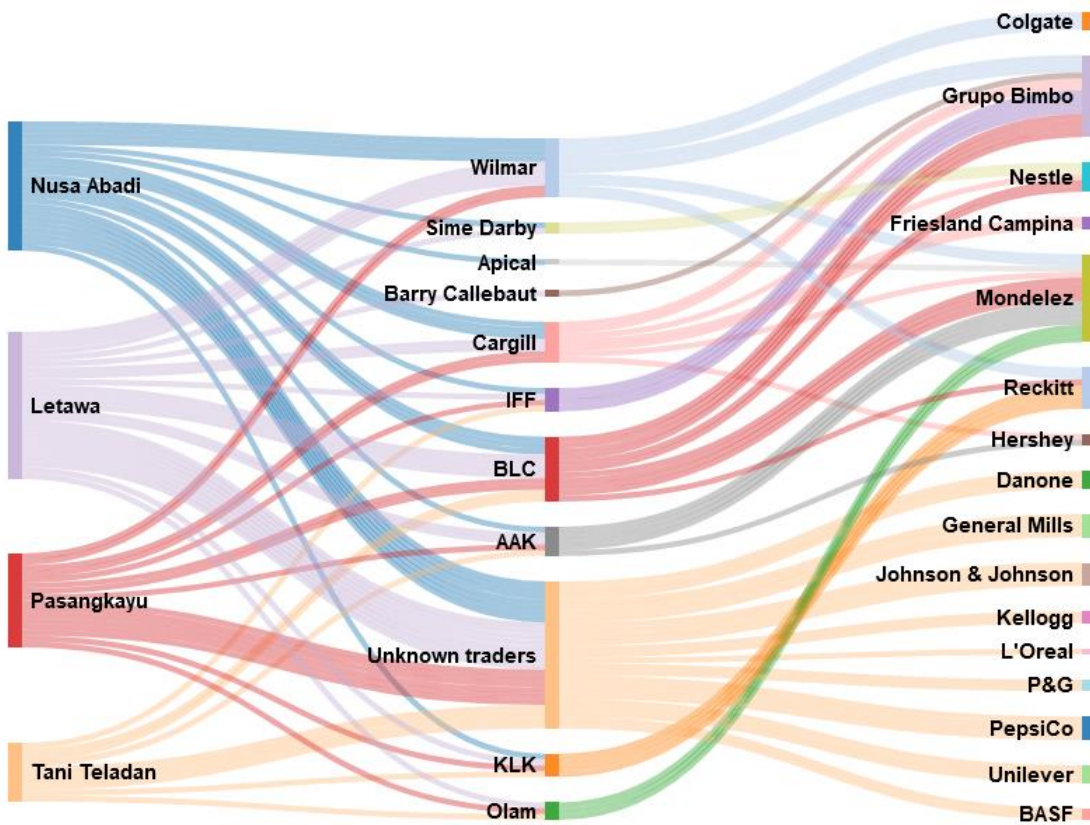


Figure 3: Links between four Astra Astro Lestari mills and major consumer goods companies - full version



5 Conclusion

Supply chain research indicates that PT ANA, PT LTT, and PT Mamuang are likely linked to four palm oil mills in Central and West Sulawesi: Nusa Abadi, Tani Teladan, Pasangkayu, and Letawa. Large palm oil traders including **Wilmar, Sime Darby, Cargill, Archer Daniels Midland, Bunge Loders Crokiaan,** and **Olam,** source from these four mills. At least 17 consumer brands, including **Procter & Gamble, PepsiCo, Unilever, Colgate, Nestle, General Mills,** and **Danone** are connected to AAL and PT ANA, PT LTT, and PT Mamuang.

Ongoing environmental and human rights violations by PT ANA, PT LTT, and PT Mamuang violate the No Deforestation, No Peatland, No Exploitation (NDPE) policies of these companies, including commitments to respect the right to Free, Prior, Informed Consent (FPIC), communities' land rights, and human rights. The presence of palm oil from AAL and PT ANA, PT LTT, and PT Mamuang in consumer companies' supply chains raises serious questions about these companies' due diligence, non-compliance, and grievance redress systems and their ability to address ongoing environmental and human rights abuses.

Endnotes

- ¹ Global Forest Watch. 2021. <https://data.globalforestwatch.org/datasets/gfw::universal-mill-list-1/about>
- ² AAL. 2021. <https://www.astra-agro.co.id/wp-content/uploads/2021/07/Traceability-June-2021.pdf>
- ³ Musim Mas. 2021. <https://www.musimmas.com/sustainability/traceability/>
- ⁴ Wilmar. 2021. <https://www.wilmar-international.com/sustainability/traceability/supply-chain-map>
- ⁵ Wilmar. 2021. https://www.wilmar-international.com/docs/default-source/default-document-library/sustainability/supply-chain/traceability-report-fy-2020/indonesia/wina-gresik_210423.pdf?sfvrsn=44af7615_2
- ⁶ Wilmar. 2021. https://www.wilmar-international.com/docs/default-source/default-document-library/sustainability/supply-chain/traceability-report-fy-2020/indonesia/mns-bitung_210423.pdf?sfvrsn=80b6769c_2
- ⁷ Wilmar. 2021. https://www.wilmar-international.com/docs/default-source/default-document-library/sustainability/supply-chain/traceability-report-fy-2020/destination/europe-rotterdam_210423.pdf?sfvrsn=51d24e18_6
- ⁸ Wilmar. 2021. https://www.wilmar-international.com/docs/default-source/default-document-library/sustainability/supply-chain/traceability-report-q4%27-2018---q3%27-2019/indonesia---rl/mns-bitung_200123.pdf?sfvrsn=396ded9f_2
- ⁹ Wilmar. 2021. https://www.wilmar-international.com/docs/default-source/default-document-library/sustainability/supply-chain/traceability-report-fy-2020/destination/europe-rotterdam_210423.pdf?sfvrsn=51d24e18_4
- ¹⁰ Wilmar. 2021. https://www.wilmar-international.com/docs/default-source/default-document-library/sustainability/supply-chain/traceability-report-q4%27-2018---q3%27-2019/indonesia---rl/mns-bitung_200123.pdf?sfvrsn=396ded9f_2
- ¹¹ Cargill. 2021. <https://www.cargill.com/doc/1432132443976/cargill-palm-mill-list.pdf>
- ¹² Cargill. 2021. <https://www.cargill.com/doc/1432132443976/cargill-palm-mill-list.pdf>
- ¹³ Cargill. 2021. <https://www.cargill.com/doc/1432132443976/cargill-palm-mill-list.pdf>
- ¹⁴ Cargill. 2021. <https://www.cargill.com/doc/1432132443976/cargill-palm-mill-list.pdf>
- ¹⁵ ADM. 2021. <https://www.adm.com/sustainability/sustainability-progress-tracker/palm-oil/supply-chain-map>
- ¹⁶ ADM. 2021. <https://assets.adm.com/Sustainability/2020-Reports/ADM-Global-2020-Q3-Q4-CU.pdf>
- ¹⁷ ADM. 2021. <https://assets.adm.com/Sustainability/2020-Reports/ADM-Global-2020-Q3-Q4-CU.pdf>
- ¹⁸ ADM. 2021. <https://assets.adm.com/Sustainability/2020-Reports/ADM-Global-2020-Q3-Q4-CU.pdf>
- ¹⁹ ADM. 2021. <https://assets.adm.com/Sustainability/2020-Reports/ADM-Global-2020-Q3-Q4-CU.pdf>
- ²⁰ ADM. 2021. <https://assets.adm.com/Sustainability/2020-Reports/ADM-Global-2020-Q3-Q4-CU.pdf>
- ²¹ BLC. 2021. <https://europe.bungelorders.com/en/material/palm>
- ²² BLC. 2021. https://opendata.arcgis.com/datasets/aa641c92315f45a9885b93841d56e7be_0.csv?where=FacilityReference%20%3D%20%27X000%27
- ²³ BLC. 2021. https://opendata.arcgis.com/datasets/aa641c92315f45a9885b93841d56e7be_0.csv?where=FacilityReference%20%3D%20%27X000%27
- ²⁴ BLC. 2021. https://opendata.arcgis.com/datasets/aa641c92315f45a9885b93841d56e7be_0.csv?where=FacilityReference%20%3D%20%27X000%27
- ²⁵ Fuji Oils. 2021. https://www.fujioilholdings.com/en/sustainability/supplychain_database/
- ²⁶ Fuji Oils. 2021. https://www.fujioilholdings.com/pdf/en/sustainability/supplychain_database/h1_2021_mill_list.pdf
- ²⁷ Olam. 2021. https://www.olamgroup.com/content/dam/olamgroup/products-and-services/oga/edible-oils/edible-oils-pdfs/olam_palm_dashboard_sep2021.pdf
- ²⁸ Olam. 2021. <https://www.olamgroup.com/content/dam/olamgroup/products-and-services/oga/edible-oils/edible-oils-pdfs/mill-list-sep2021.zip>
- ²⁹ Olam. 2021. <https://www.olamgroup.com/content/dam/olamgroup/products-and-services/oga/edible-oils/edible-oils-pdfs/mill-list-sep2021.zip>
- ³⁰ Olam. 2021. <https://www.olamgroup.com/content/dam/olamgroup/products-and-services/oga/edible-oils/edible-oils-pdfs/mill-list-sep2021.zip>
- ³¹ Olam. 2021. <https://www.olamgroup.com/content/dam/olamgroup/products-and-services/oga/edible-oils/edible-oils-pdfs/mill-list-sep2021.zip>
- ³² Sime Darby. 2021. <https://www.simedarbyplantation.com/sites/default/files/SDO%20South%20Africa%20-%20TDD%20Q1%20to%20Q3%202019.pdf>
- ³³ Sime Darby. 2021. <https://www.simedarbyplantation.com/sites/default/files/SDO%20Zwijdrecht%20-%20TDD%20Q1%20to%20Q3%202019.pdf>
- ³⁴ Sime Darby. 2021. <https://www.simedarbyplantation.com/sites/default/files/SDO%20South%20Africa%20-%20TDD%20Q1%20to%20Q3%202019.pdf>
- ³⁵ Sime Darby. 2021. <https://www.simedarbyplantation.com/sites/default/files/SDO%20Zwijdrecht%20-%20TDD%20Q1%20to%20Q3%202019.pdf>
- ³⁶ Sime Darby. 2021. <https://www.simedarbyplantation.com/sites/default/files/SDO%20Zwijdrecht%20-%20TDD%20Q1%20to%20Q3%202019.pdf>
- ³⁷ Sime Darby. 2021. <https://www.simedarbyplantation.com/sites/default/files/SDO%20South%20Africa%20-%20TDD%20Q1%20to%20Q3%202019.pdf>
- ³⁸ Sime Darby. 2021. <https://www.simedarbyplantation.com/sites/default/files/SDO%20Zwijdrecht%20-%20TDD%20Q1%20to%20Q3%202019.pdf>
- ³⁹ AAK. 2021. <https://www.aak.com/siteassets/sustainability/aak-public-mill-list-september-2021.pdf>
- ⁴⁰ AAK. 2021. <https://www.aak.com/siteassets/sustainability/aak-public-mill-list-september-2021.pdf>
- ⁴¹ AAK. 2021. <https://www.aak.com/siteassets/sustainability/aak-public-mill-list-september-2021.pdf>
- ⁴² AAK. 2021. <https://www.aak.com/siteassets/sustainability/aak-public-mill-list-september-2021.pdf>
- ⁴³ AAK. 2021. <https://www.aak.com/siteassets/sustainability/aak-public-mill-list-september-2021.pdf>
- ⁴⁴ LDC. 2021. <https://www.idc.com/sustainability/responsible-supply-chain/sustainable-palm-oil/>
- ⁴⁵ LDC. 2021. <https://www.idc.com/wp-content/uploads/H1-2021-Supply-Chain-Traceability-final.pdf>
- ⁴⁶ KLK. 2021. <https://www.klkoleo.com/sites/default/files/Traceability-KLKOLEO-20211014.pdf>
- ⁴⁷ KLK. 2021. <https://www.klkoleo.com/sites/default/files/Traceability-KLKOLEO-20211014.pdf>

-
- ⁴⁸ KLK. 2021. <https://www.klkoleo.com/sites/default/files/Traceability-KLKOLEO-20211014.pdf>
- ⁴⁹ KLK. 2021. <https://www.klkoleo.com/sites/default/files/Traceability-KLKOLEO-20211014.pdf>
- ⁵⁰ KLK. 2021. <https://www.klkoleo.com/sites/default/files/Traceability-KLKOLEO-20211014.pdf>
- ⁵¹ BASF. 2021. <https://www.basf.com/nz/en/who-we-are/sustainability/we-source-responsibly/palm-dialog.html>
- ⁵² BASF. 2021. <https://www.basf.com/global/documents/en/sustainability/we-source-responsibly/palm-dialog/BASF%20Global%20Palm%20Oil%20Mill%20List%20for%202020.pdf>
- ⁵³ BASF. 2021. <https://www.basf.com/global/documents/en/sustainability/we-source-responsibly/palm-dialog/BASF%20Global%20Palm%20Oil%20Mill%20List%20for%202020.pdf>
- ⁵⁴ BASF. 2021. <https://www.basf.com/global/documents/en/sustainability/we-source-responsibly/palm-dialog/BASF%20Global%20Palm%20Oil%20Mill%20List%20for%202020.pdf>
- ⁵⁵ Beiersdorfer. 2021. <https://www.beiersdorf.com/sustainability/environment/sustainable-land-use/palm-oil>
- ⁵⁶ Beiersdorfer. 2020. <https://www.beiersdorf.com/~media/Beiersdorf/sustainability/environment/sustainable-land-use/palm-oil/downloads/Beiersdorf-Palm-Mills-List-2020.pdf>
- ⁵⁷ Colgate. https://www.colgatepalmolive.com/content/dam/cp-sites/corporate/corporate/en_us/corp/locale-assets/pdf/colgate-palmolive-list-of-mills-2020h1.pdf
- ⁵⁸ Colgate. https://www.colgatepalmolive.com/content/dam/cp-sites/corporate/corporate/en_us/corp/locale-assets/pdf/colgate-palmolive-list-of-mills-2020h1.pdf
- ⁵⁹ Colgate. https://www.colgatepalmolive.com/content/dam/cp-sites/corporate/corporate/en_us/corp/locale-assets/pdf/colgate-palmolive-list-of-mills-2020h1.pdf
- ⁶⁰ Colgate. https://www.colgatepalmolive.com/content/dam/cp-sites/corporate/corporate/en_us/corp/locale-assets/pdf/colgate-palmolive-list-of-mills-2020h1.pdf
- ⁶¹ Danone. 2021. <https://www.danone.com/impact/suppliers/sustainable-sourcing.html>
- ⁶² Danone. 2021. <https://www.danone.com/content/dam/danone-corp/danone-com/about-us-impact/policies-and-commitments/en/2021/Palm-oil-Suppliers-Mills-list-update-H2-2020-Danone.pdf>
- ⁶³ Danone. 2021. <https://www.danone.com/content/dam/danone-corp/danone-com/about-us-impact/policies-and-commitments/en/2021/Palm-oil-Suppliers-Mills-list-update-H2-2020-Danone.pdf>
- ⁶⁴ Danone. 2021. <https://www.danone.com/content/dam/danone-corp/danone-com/about-us-impact/policies-and-commitments/en/2021/Palm-oil-Suppliers-Mills-list-update-H2-2020-Danone.pdf>
- ⁶⁵ Danone. 2021. <https://www.danone.com/content/dam/danone-corp/danone-com/about-us-impact/policies-and-commitments/en/2021/Palm-oil-Suppliers-Mills-list-update-H2-2020-Danone.pdf>
- ⁶⁶ Ferrero. 2020. <https://www.ferrerosustainability.com/int/en/node/120>
- ⁶⁷ Friesland Campina. 2021. <https://www.frieslandcampina.com/sustainability/sustainability-in-the-supply-chain/responsible-sourcing/>
- ⁶⁸ Friesland Campina. 2021. https://www.frieslandcampina.com/uploads/2021/04/FY_2020_PO_PKO_Mill_Traceability_Friesland_Campina.pdf
- ⁶⁹ Friesland Campina. 2021. https://www.frieslandcampina.com/uploads/2021/04/FY_2020_PO_PKO_Mill_Traceability_Friesland_Campina.pdf
- ⁷⁰ Friesland Campina. 2021. https://www.frieslandcampina.com/uploads/2021/04/FY_2020_PO_PKO_Mill_Traceability_Friesland_Campina.pdf
- ⁷¹ General Mills. 2021. <https://www.generalmills.com/en/News/Issues/palm-oil-statement>
- ⁷² General Mills. 2021. <https://www.generalmills.com/~media/Files/sustainability/July2021GeneralMillsH12021MillList19072021.pdf?la=en>
- ⁷³ General Mills. 2021. <https://www.generalmills.com/~media/Files/sustainability/July2021GeneralMillsH12021MillList19072021.pdf?la=en>
- ⁷⁴ General Mills. 2021. <https://www.generalmills.com/~media/Files/sustainability/July2021GeneralMillsH12021MillList19072021.pdf?la=en>
- ⁷⁵ General Mills. 2021. <https://www.generalmills.com/~media/Files/sustainability/July2021GeneralMillsH12021MillList19072021.pdf?la=en>
- ⁷⁶ General Mills. 2021. <https://www.generalmills.com/~media/Files/sustainability/July2021GeneralMillsH12021MillList19072021.pdf?la=en>
- ⁷⁷ Grupo Bimbo. 2020. <https://grupobimbo-com-custom01-assets.s3.amazonaws.com/s3fs-public/Grupo-Bimbo-Palm-Oil-Policy-Action-Plan-June-Year-6.pdf>
- ⁷⁸ Grupo Bimbo. 2021. <https://grupobimbo-com-custom01-assets.s3.amazonaws.com/s3fs-public/Grupo-Bimbo-2020-Mill-List.pdf>
- ⁷⁹ Grupo Bimbo. 2021. <https://grupobimbo-com-custom01-assets.s3.amazonaws.com/s3fs-public/Grupo-Bimbo-2020-Mill-List.pdf>
- ⁸⁰ Grupo Bimbo. 2021. <https://grupobimbo-com-custom01-assets.s3.amazonaws.com/s3fs-public/Grupo-Bimbo-2020-Mill-List.pdf>
- ⁸¹ Grupo Bimbo. 2021. <https://grupobimbo-com-custom01-assets.s3.amazonaws.com/s3fs-public/Grupo-Bimbo-2020-Mill-List.pdf>
- ⁸² Grupo Bimbo. 2021. <https://grupobimbo-com-custom01-assets.s3.amazonaws.com/s3fs-public/Grupo-Bimbo-2020-Mill-List.pdf>
- ⁸³ Hershey. 2021. https://www.thehersheycompany.com/en_us/home/sustainability/sustainability-focus-areas/responsible-sourcing/priority-ingredients-and-materials/palm-oil-sourcing.html
- ⁸⁴ Hershey. 2021. <https://www.thehersheycompany.com/content/dam/hershey-corporate/documents/responsible-sourcing/palm-oil-sourcing/hershey-july-december-2020-mill-listing.pdf>
- ⁸⁵ Hershey. 2021. <https://www.thehersheycompany.com/content/dam/hershey-corporate/documents/responsible-sourcing/palm-oil-sourcing/hershey-july-december-2020-mill-listing.pdf>
- ⁸⁶ Hershey. 2021. <https://www.thehersheycompany.com/content/dam/hershey-corporate/documents/responsible-sourcing/palm-oil-sourcing/hershey-july-december-2020-mill-listing.pdf>
- ⁸⁷ IKEA. 2021. <https://about.ikea.com/en/about-us/our-view-on/palm-oil>
- ⁸⁸ J&J. 2021. <https://www.inj.com/about-inj/policies-and-positions/responsible-palm-oil-sourcing-policy>
- ⁸⁹ J&J. 2021. <https://www.inj.com/list-of-potential-mills>
- ⁹⁰ J&J. 2021. <https://www.inj.com/list-of-potential-mills>
- ⁹¹ J&J. 2021. <https://www.inj.com/list-of-potential-mills>
- ⁹² J&J. 2021. <https://www.inj.com/list-of-potential-mills>
- ⁹³ J&J. 2021. <https://www.inj.com/list-of-potential-mills>

-
- ⁹⁴ Kellogg. 2021. <https://crreport.kelloggcompany.com/sourcing-palm-oil>
- ⁹⁵ Kellogg. 2019. <https://crreport.kelloggcompany.com/download/Kellogg+Mill+List+2018.pdf>
- ⁹⁶ Kellogg. 2019. <https://crreport.kelloggcompany.com/download/Kellogg+Mill+List+2018.pdf>
- ⁹⁷ Kellogg. 2019. <https://crreport.kelloggcompany.com/download/Kellogg+Mill+List+2018.pdf>
- ⁹⁸ Kellogg. 2019. <https://crreport.kelloggcompany.com/download/Kellogg+Mill+List+2018.pdf>
- ⁹⁹ L'Oreal. 2020. <https://www.loreal.com/en/articles/sharing-beauty-with-all/including-the-fight-against-deforestation-in-the-supplier-selection-process/>
- ¹⁰⁰ L'Oreal. 2020. <https://www.loreal.com/-/media/project/loreal/brand-sites/corp/master/lcorp/documents-media/publications/l4f/list-of-mills-potentially-connected-to-l-oreal--2019.pdf>
- ¹⁰¹ L'Oreal. 2020. <https://www.loreal.com/-/media/project/loreal/brand-sites/corp/master/lcorp/documents-media/publications/l4f/list-of-mills-potentially-connected-to-l-oreal--2019.pdf>
- ¹⁰² L'Oreal. 2020. <https://www.loreal.com/-/media/project/loreal/brand-sites/corp/master/lcorp/documents-media/publications/l4f/list-of-mills-potentially-connected-to-l-oreal--2019.pdf>
- ¹⁰³ L'Oreal. 2020. <https://www.loreal.com/-/media/project/loreal/brand-sites/corp/master/lcorp/documents-media/publications/l4f/list-of-mills-potentially-connected-to-l-oreal--2019.pdf>
- ¹⁰⁴ Mars. 2021. <https://www.mars.com/about/policies-and-practices/palm-oil-policy>
- ¹⁰⁵ Mondelez. 2021. <https://www.mondelezinternational.com/Snacking-Made-Right/ESG-Topics/Palm-Oil>
- ¹⁰⁶ Mondelez. 2021. https://www.mondelezinternational.com/-/media/Mondelez/Snacking-Made-Right/ESG-Topics/Palm-Oil/Mills_Data2125.pdf
- ¹⁰⁷ Mondelez. 2021. https://www.mondelezinternational.com/-/media/Mondelez/Snacking-Made-Right/ESG-Topics/Palm-Oil/Mills_Data2125.pdf
- ¹⁰⁸ Mondelez. 2021. https://www.mondelezinternational.com/-/media/Mondelez/Snacking-Made-Right/ESG-Topics/Palm-Oil/Mills_Data2125.pdf
- ¹⁰⁹ Mondelez. 2021. https://www.mondelezinternational.com/-/media/Mondelez/Snacking-Made-Right/ESG-Topics/Palm-Oil/Mills_Data2125.pdf
- ¹¹⁰ Mondelez. 2021. https://www.mondelezinternational.com/-/media/Mondelez/Snacking-Made-Right/ESG-Topics/Palm-Oil/Mills_Data2125.pdf
- ¹¹¹ Nestle. 2021. <https://www.nestle.com/corporate-info/sustainability/sustainable-supply-chain/traceability-dashboard/palm-oil-dashboard>
- ¹¹² Nestle. 2021. <https://www.nestle.com/csv/raw-materials/palm-oil>
- ¹¹³ Nestle. 2021. <https://www.nestle.com/sites/default/files/2019-08/supply-chain-disclosure-palm-oil.pdf>
- ¹¹⁴ Nestle. 2021. <https://www.nestle.com/sites/default/files/2019-08/supply-chain-disclosure-palm-oil.pdf>
- ¹¹⁵ Nestle. 2021. <https://www.nestle.com/sites/default/files/2019-08/supply-chain-disclosure-palm-oil.pdf>
- ¹¹⁶ Nestle. 2021. <https://www.nestle.com/sites/default/files/2019-08/supply-chain-disclosure-palm-oil.pdf>
- ¹¹⁷ P&G. 2021. <https://www.pginvestor.com/esg/environmental/forestry/responsible-sourcing/default.aspx>
- ¹¹⁸ P&G. 2021. https://s1.q4cdn.com/695946674/files/doc_downloads/esg/2021/PG-Palm-Oils-Mill-List-FINAL.pdf
- ¹¹⁹ P&G. 2021. https://s1.q4cdn.com/695946674/files/doc_downloads/esg/2021/PG-Palm-Oils-Mill-List-FINAL.pdf
- ¹²⁰ P&G. 2021. https://s1.q4cdn.com/695946674/files/doc_downloads/esg/2021/PG-Palm-Oils-Mill-List-FINAL.pdf
- ¹²¹ P&G. 2021. https://s1.q4cdn.com/695946674/files/doc_downloads/esg/2021/PG-Palm-Oils-Mill-List-FINAL.pdf
- ¹²² PepsiCo. 2021. <https://www.pepsico.com/sustainability/palm-oil>
- ¹²³ PepsiCo. 2020. https://www.pepsico.com/docs/album/esg-topics-policies/pepsico-mill-list-2019.pdf?sfvrsn=a40f742b_4
- ¹²⁴ PepsiCo. 2020. https://www.pepsico.com/docs/album/esg-topics-policies/pepsico-mill-list-2019.pdf?sfvrsn=a40f742b_4
- ¹²⁵ PepsiCo. 2020. https://www.pepsico.com/docs/album/esg-topics-policies/pepsico-mill-list-2019.pdf?sfvrsn=a40f742b_4
- ¹²⁶ PepsiCo. 2020. https://www.pepsico.com/docs/album/esg-topics-policies/pepsico-mill-list-2019.pdf?sfvrsn=a40f742b_4
- ¹²⁷ PepsiCo. 2020. https://www.pepsico.com/docs/album/esg-topics-policies/pepsico-mill-list-2019.pdf?sfvrsn=a40f742b_4
- ¹²⁸ Reckitt. 2021. https://www.reckitt.com/media/8883/rb-overall-master-mill-list-2020_external-final.pdf
- ¹²⁹ Reckitt. 2021. https://www.reckitt.com/media/8883/rb-overall-master-mill-list-2020_external-final.pdf
- ¹³⁰ Reckitt. 2021. https://www.reckitt.com/media/8883/rb-overall-master-mill-list-2020_external-final.pdf
- ¹³¹ Reckitt. 2021. https://www.reckitt.com/media/8883/rb-overall-master-mill-list-2020_external-final.pdf
- ¹³² Reckitt. 2021. https://www.reckitt.com/media/8883/rb-overall-master-mill-list-2020_external-final.pdf
- ¹³³ Unilever. 2021. <https://www.unilever.com/planet-and-society/protect-and-regenerate-nature/sustainable-palm-oil/>
- ¹³⁴ Unilever. 2021. <https://assets.unilever.com/files/92ui5egz/production/e84d22e1c71e43033d21b63a172143c2f54595c8.pdf/unilevers-palm-oil-mill-list-declared-by-ul-suppliers-2020.pdf>
- ¹³⁵ Unilever. 2021. <https://assets.unilever.com/files/92ui5egz/production/e84d22e1c71e43033d21b63a172143c2f54595c8.pdf/unilevers-palm-oil-mill-list-declared-by-ul-suppliers-2020.pdf>
- ¹³⁶ Unilever. 2021. <https://assets.unilever.com/files/92ui5egz/production/e84d22e1c71e43033d21b63a172143c2f54595c8.pdf/unilevers-palm-oil-mill-list-declared-by-ul-suppliers-2020.pdf>
- ¹³⁷ Unilever. 2021. <https://assets.unilever.com/files/92ui5egz/production/e84d22e1c71e43033d21b63a172143c2f54595c8.pdf/unilevers-palm-oil-mill-list-declared-by-ul-suppliers-2020.pdf>
- ¹³⁸ Unilever. 2021. <https://assets.unilever.com/files/92ui5egz/production/e84d22e1c71e43033d21b63a172143c2f54595c8.pdf/unilevers-palm-oil-mill-list-declared-by-ul-suppliers-2020.pdf>